



WE LOVE

KITCHEN DESIGN





**WE LOVE INNOVATION
AND LEADING THE
CHARGE IN THE
LATEST AND GREATEST
KITCHEN DESIGN
STYLES.**

Ever changing and constantly evolving; new ideas and new technology is changing the face of kitchen design. As is our way of life.

Here are some of the most exciting trends in kitchen design right now that we predict will continue to grow over the next year.



MID-CENTURY



IN RECENT YEARS, THE MID-CENTURY MODERN DESIGN HAS EXPERIENCED A REMARKABLE RISE IN POPULARITY, ESTABLISHING ITSELF AS A DISTINCTIVE AESTHETIC IN MODERN KITCHEN RENOVATIONS.

Mid-Century modern design refers to a design trend that originated in the mid-20th century, roughly spanning from the 1940s to the late 1960s. It's all about clean lines, simple shapes, not too much decoration, and a focus on a seamless integration of both form and function.

Classic elements of mid century modern kitchen design include;

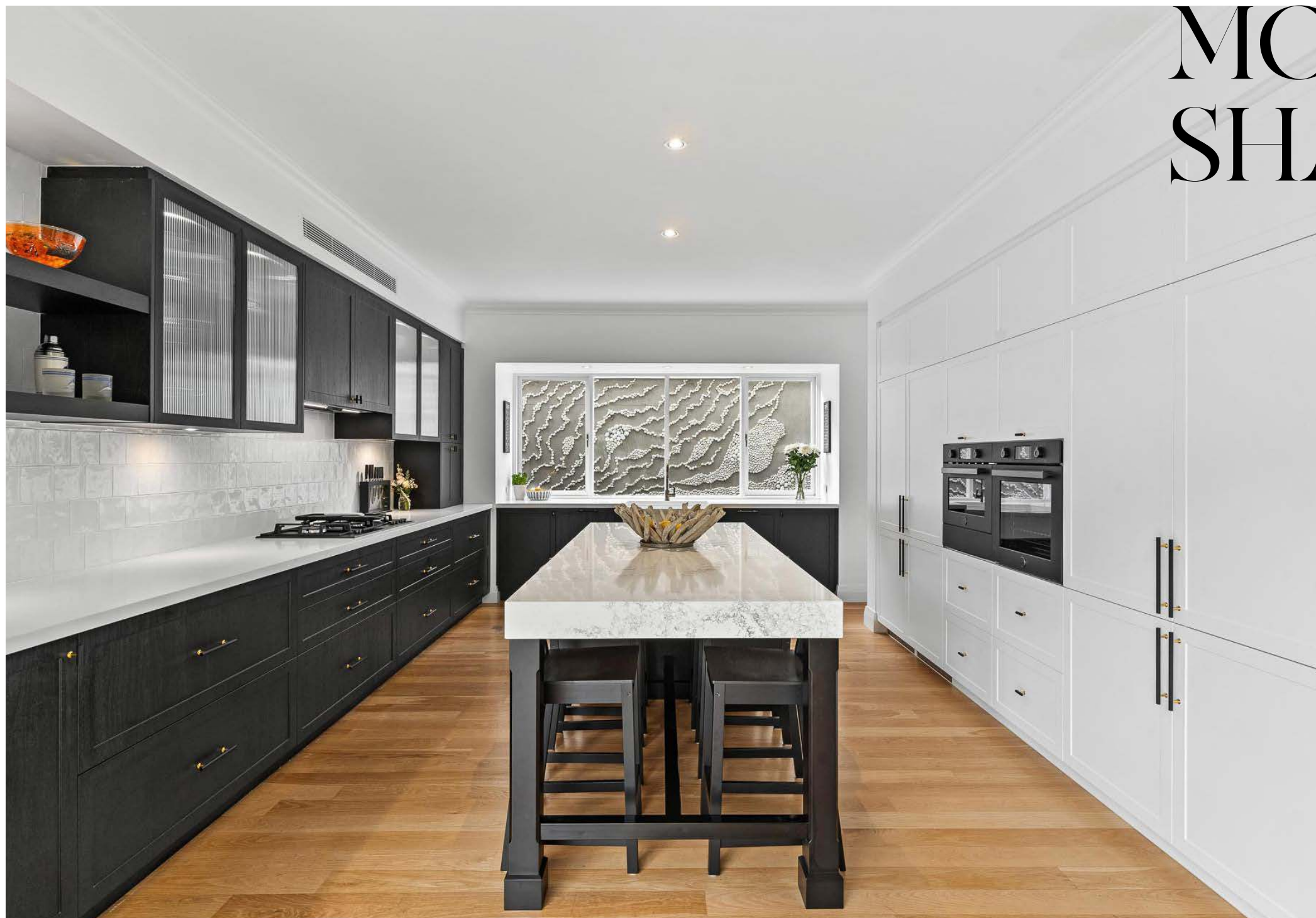
- Connection to nature: large windows, open spaces
- Mix of materials: traditional (wood) and modern (metal, glass, etc.)
- Emphasis on functionality over decoration
- Earthy colour palette, with pops of vibrant hues
- Bold geometric patterns: tile and decor choice.



In our Myaree kitchen shown below, the Polytec Bari profile cabinetry to the front of the kitchen peninsula introduces a tactile element that echoes back the Mid-Century design era when this style first came to prominence. Florentine Walnut cabinetry coordinates beautifully with the home's existing hardwood floors. Jewel-toned green vertical kitkat tiles have been selected for the splashback to add a pop of colour.

Our Duncraig kitchen shown above perfectly encapsulates Mid-Century modern design. Polytec Florentine Walnut cabinetry and STECCAWOOD battens harmonise beautifully with existing wooden elements in this Mid-Century modern home. This kitchen features walnut cabinetry, contemporary colours, curves and retro accents such as the wooden Kethy Archive handles. It combines clean lines, geometric shapes, and functional storage while modernising the this homes' existing architectural features.





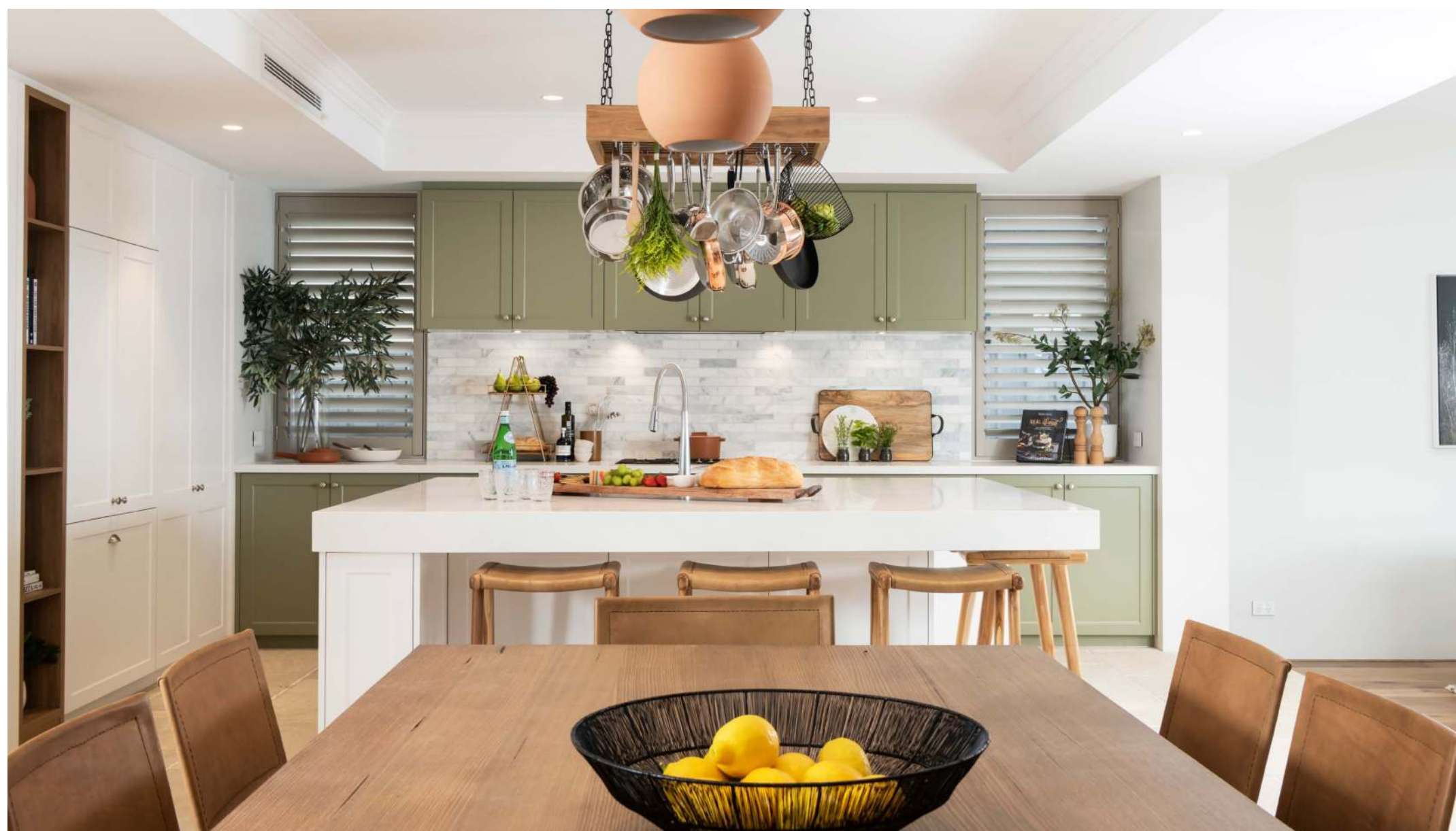
MODERN SHAKER

MODERN SHAKER KITCHENS OFFER A FRESH TAKE ON THE TRADITIONAL ALL WHITE HAMPTONS STYLE KITCHEN.

Modern Shaker design embraces colour and features cleaner kitchen designs with minimal layering and clear, predictable lines. We view Modern Shaker kitchens as the evolution beyond the traditional Hamptons design; and they have gained significant popularity in kitchen design for both contemporary and character-style homes.



Modern Shaker kitchens offer a fresh take on traditional shaker-style cabinetry, embracing a clean and sleek aesthetic that breaks from the classic all-white Hamptons kitchen. This contemporary shaker style features cleaner and rejuvenated versions of the traditional Hamptons style, marked by minimal layering and clear, well-defined lines.



Here are some design features we love for Modern Shaker kitchens:

- Paired back cabinetry profiles such as Polytec Hamptons, Casino, Brooklyn, Berrilee and Ascot
- Colourful designs that embrace single or two tone cabinetry design
- Contemporary style cabinetry handles like half moon shapes or stone finishes. Handleless cabinetry also works for this style
- Combining shaker profile with flat panel cabinetry for a unique eclectic look and feel
- Using contemporary design features such as open or floating shelving with glass-fronted cabinets
- Opt for integrated appliances to align with the modern aspect of this kitchen style, moving away from prominent range hoods and bulky appliances
- Play with textures by mixing and matching materials like in our Watermans Bay kitchen shown above that has concrete kitchen island.

NEW AGE MINIMALIST



IN 2024, THE MODERN KITCHEN UNDERGOES A SLEEK TRANSFORMATION WITH NEW AGE MINIMALIST DESIGN.

This style focuses on clean lines and luxurious design details that make a statement. It is a style where the devil truly lies in the details, with every element thoughtfully considered.

New Age Minimalist kitchens depart from traditional flat-panel cabinetry styles and showcase profiled cabinetry designs using Polytec profiles such as Chifley, Ascot, and Sussex that create a refined aesthetic. To add depth and luxury, two-tone colour schemes and curved cabinetry can be incorporated seamlessly into your design. Add an eclectic edge by choosing interesting textures from Polytec's Calcutta or STECCAWOOD ranges offering you options such as square, rectangle or concave curve profiles.



New Age Minimalist kitchens will feature benchtop thicknesses at opposite ends of the scale for maximum impact. To create a sleek and stylish look we love designing with 20mm stone benchtops. Thicker stone benchtops are the ultimate luxury inclusion for your kitchen. The thicker you go; the more drama you bring to your design!

This kitchen style prioritises minimalism, seamlessly integrating appliances to maintain a clean and streamlined appearance. Induction cooktops and innovative down-draft extraction systems further contribute to this uncluttered, modern aesthetic, perfect for today's fast-paced lifestyles.

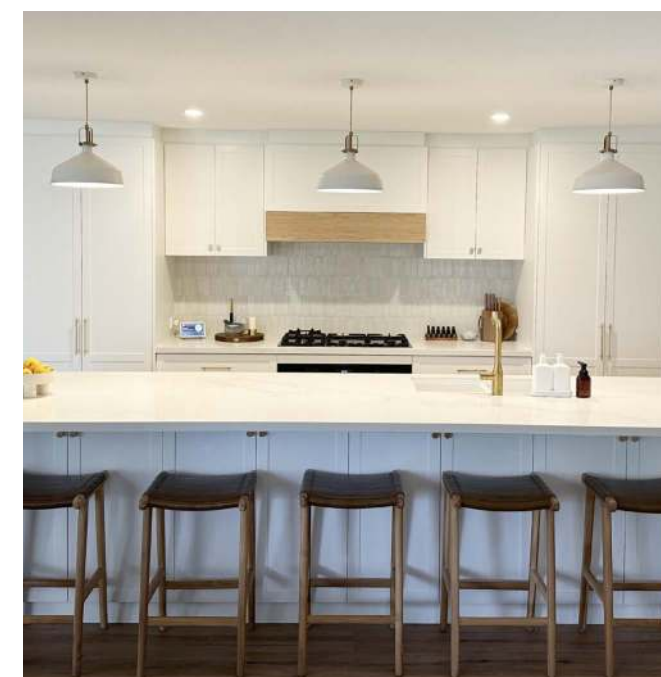


MODERN FARMHOUSE

MODERN FARMHOUSE KITCHENS TODAY PROVIDE A CONTEMPORARY TAKE ON THE CLASSIC FARMHOUSE STYLE.

They achieve a harmonious blend of rustic charm and sophistication, moving away from the rugged, traditional appearance towards a more refined and polished kitchen design. With high-end integrated appliances, modern lighting, stylish handles, and luxurious countertop choices, this style adds an elegant touch to the heart of your home.

This style is characterised by its crisp whites and contemporary colour palettes, offering flexibility in design choices. Whether you prefer glass-fronted cabinets, open shelving, boxed shelving, or a custom rangehood design like the one showcased here, modern farmhouse kitchens offer numerous customisation options.



Typically, cabinetry in this style features a shaker profile, as seen with the Polytec Ascot profile in the image pictured top right. We also gravitate towards profiles like Hamptons (pictured left) or Sussex by Polytec for achieving the Modern Farmhouse style.

Modern Farmhouse kitchens also embrace current trends, such as floor-to-ceiling cabinetry, integrated appliances, and smart technology solutions like point pods and docking drawers seamlessly integrated beneath the surface.



JAPANDI

JAPANDI KITCHENS SEAMLESSLY BLEND SCANDINAVIAN AND JAPANESE DESIGN, CREATING A HARMONIOUS FUSION OF THE TWO ICONIC STYLES.

This approach celebrates clean lines, natural elements, well-lit spaces, and a predominantly neutral colour palette with an emphasis on darker and earthy tones.

At the heart of Japandi design is a commitment to simplicity, aiming to create a serene and tranquil atmosphere. The neutral colour palette serves as a backdrop, allowing the interplay of natural materials and textures to take center stage.

Our Wanneroo kitchen shown here is a perfect example of the merging of these two design styles, effortlessly harmonising Scandinavian clean lines with minimalist Japanese functionality.

In this kitchen, you'll notice a strong emphasis on uncluttered aesthetics and a dedication to functional design, both integral elements of the Japandi style. Pendant lights not only provide warm and inviting illumination but also add texture and visual interest, serving both practical and decorative purposes, enhancing the overall ambiance of the space.

Japandi excels at bringing equilibrium and harmony to your living spaces, making it an excellent choice for those who deeply appreciate the elegance of simplicity and the transformative influence of minimalism in their homes.



KITCHEN ISLANDS

KITCHEN ISLANDS NOT ONLY SERVE AS FUNCTIONAL PIECES OF FURNITURE FOR THE KITCHEN; THEY HAVE BECOME A COVETED DESIGN FEATURE.

Almost everyone desires an island in their kitchen, and for good reason. Not only do they add functionality, but they also create a seamless flow in your kitchen space, making it more inviting and social.

Kitchen islands serve as a hub for gathering and connecting with family and friends. They provide a designated place to stand and chat, ensuring that even when cooking, you can stay connected with those around you.



Kitchen islands offer a wide range of design possibilities that can truly elevate your kitchen space:

- Use contrasting stone choices to make a visual impact
- Incorporate waterfall edges for a contemporary touch
- Explore layered island designs to create a wow factor
- Opt for a cantilevered island for a sleek and stylish effect
- Consider an oversized island that can also serve as an informal dining area
- Embrace the trending style of curved islands to add a touch of luxury to your kitchen.

Kitchen islands can be designed to accommodate dining tables or eating nooks, offering a versatile dining experience right in the heart of your kitchen. You can choose to incorporate wrap-around seating, making the island an even more central and inclusive part of your home. As contemporary kitchen designs move away from extensive overhead cabinetry, islands are also incorporating integrated appliances and innovative storage solutions for kitchen essentials. In essence, the kitchen island has transformed into a multi-functional and stylish centerpiece in modern kitchen design.





VERTICAL DETAILING



THIS KITCHEN TREND IS ALL ABOUT ADDING INTEREST TO YOUR KITCHEN DESIGN.

Vertical detailing adds texture and allows you add interest to large sections of single colour cabinetry like our kitchen design pictured here. In this kitchen we have paired Black Polytec VENETTE with Calcutta 10 cabinetry as a design feature to what otherwise would have just been a dark wall of cupboards.



Polytec's Calcutta range of thermolaminated doors is perfect for this trend; as is Polytec Steccawood which can also be used to apply this trend in curved applications. Another beautiful demonstration of how to apply this trend is shown here in our white coastal inspired kitchen design. This time we have used Calcutta profile on the front of the kitchen island and the cupboards to the left of the island to create interest in layers of white cabinetry.

A striking way to apply the vertical detailing trend in your kitchen design is to experiment with negative detailing. One way we have done this to create creative cabinet design is applying square wood tone STECCAWOOD battens on a black cabinetry base to create contrast.





CURVES

CURVED ELEMENTS HAVE BECOME A PROMINENT TREND IN KITCHEN DESIGN, AND THEY'RE EXPECTED TO MAINTAIN THEIR POPULARITY.

Incorporating a curved island into your kitchen design is an excellent way to embrace the curves trend. Curved islands serve as captivating focal points, expanding the available space and offering a contrasting element within an otherwise symmetrical kitchen layout. Curved kitchen islands are particularly impressive in open-plan spaces, seamlessly connecting the kitchen to the living areas or when they are designed to serve as multifunctional dining tables.





We love adding texture to curved kitchen islands by using STECCAWOOD battens around the edge of the island

STECCAWOOD is used to create curves and it also has curved profiles such as the half round or concave profiles that can also be used on straight sections of cabinetry.

Embracing curves can go beyond just incorporating a curved island into your kitchen – it can extend to other curved elements as well, including custom cabinetry and elements such as handles and feature lighting. Incorporating curves into your kitchen design brings equilibrium to your space, adding organic lines and introducing a more gentle and softer feel to your overall design.

THE RETURN OF COLOUR



**WE'RE VERY MUCH
WELCOMING OUR
CLIENTS EMBRACING
COLOUR IN THEIR
KITCHENS ONCE MORE!**

We've started to see some really exciting colour combinations hit our factory floor with green being one of the most popular colour selections to date

Green is an eye-catching yet timeless colour choice for your kitchen. Polytec Topiary is one of our most popular selections and is a stunning mid-tone green that can work to enhance the appeal of flat panel cabinetry or create contrast a vibrant kitchen like this south west project pictured here.



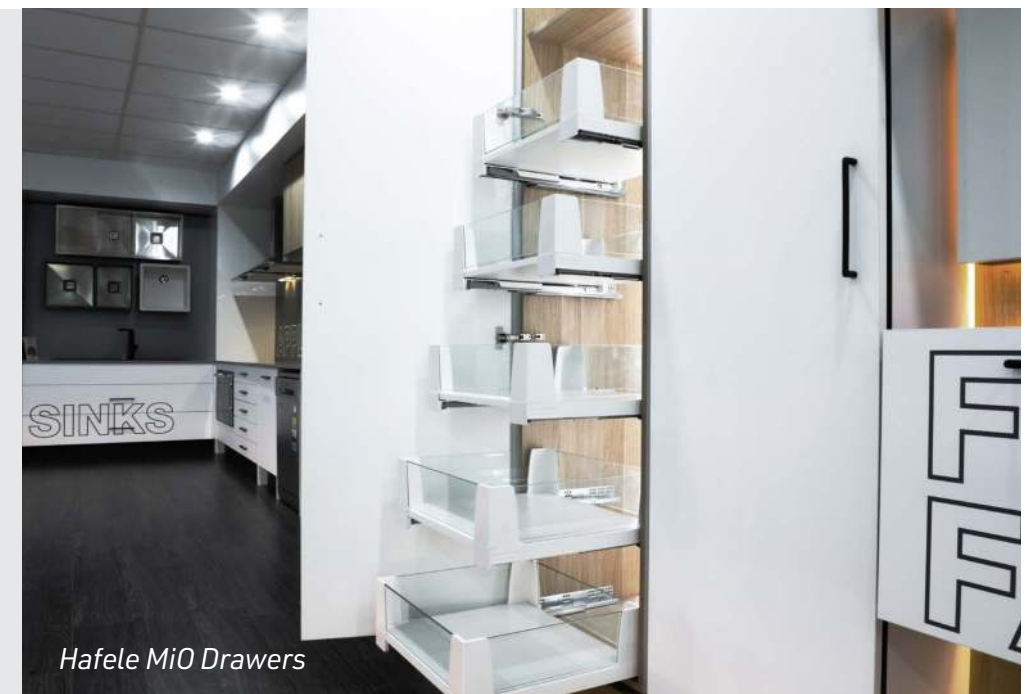
If you like green but find Topiary a bit too bold, we also love Polytec Verdelho for its lighter pale-toned palette that brings subtle hints of green to your design and fits neatly into a calm and relaxed palette.

Blue kitchen designs are also on the rise and pair beautifully with gold fixtures and fitting like shown here. This kitchen uses Polytec Habitat Smooth which is a beautiful mid tone teal-blue. As the year progresses we're predicting we are likely to see more warmer toned kitchens in shades of terracotta.

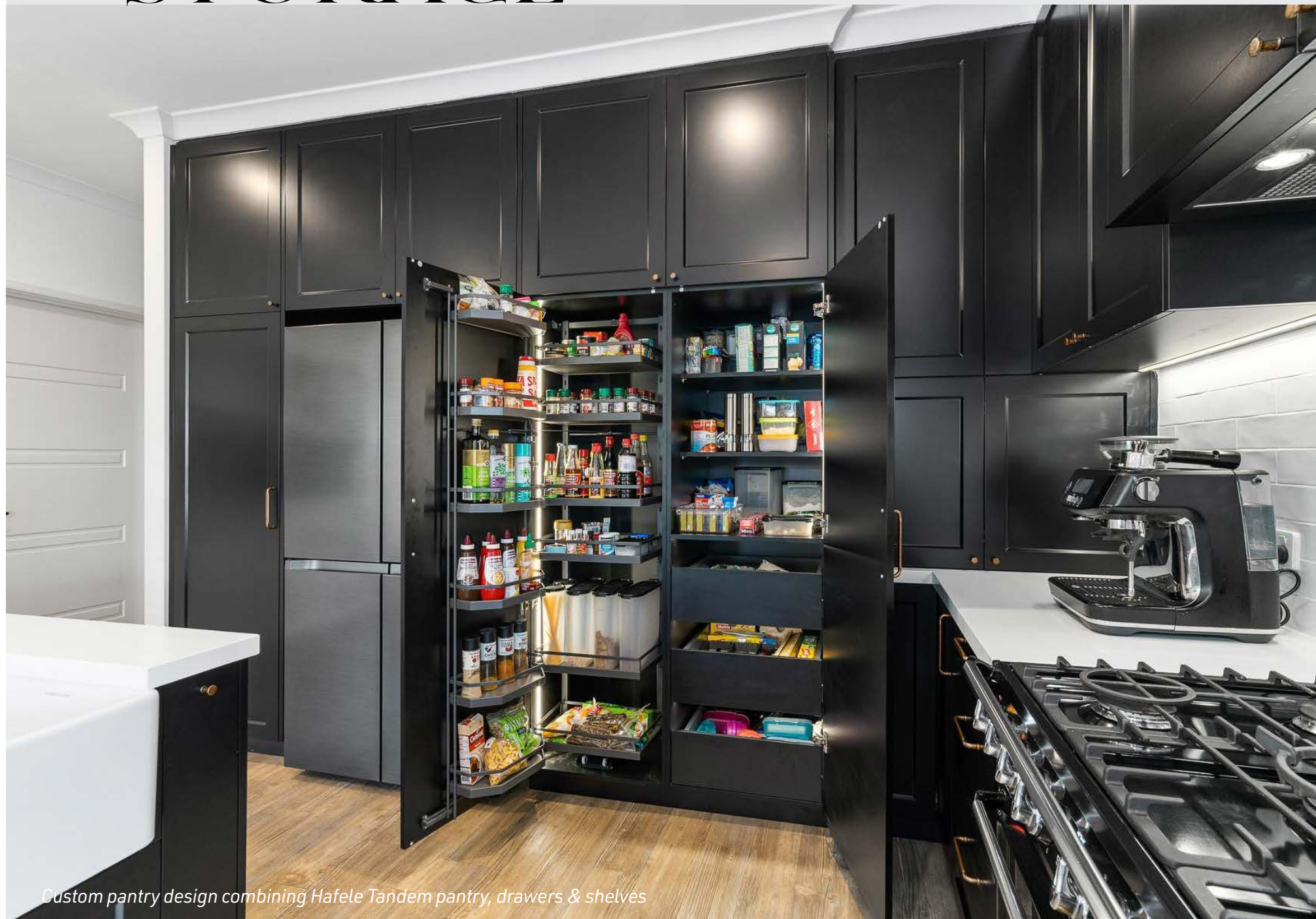
Bringing drama to your kitchen with colour can also be executed with home decor, statement benchtops and splashbacks or colourful tile selections like the kitchen design shown below. Painted kitchens offer the ultimate for personalisation as you can select your exact shade of blue or design your kitchen in any statement colour you like.



OPTIMISED STORAGE



Hafele MiO Drawers



Custom pantry design combining Hafele Tandem pantry, drawers & shelves

CLEVER KITCHEN DESIGN ALLOWS FOR OPTIMISED STORAGE.

This essentially means that your kitchen has been designed so everything has its place, keeping your kitchen sleek and uncluttered for you to enjoy.

Through an integrated design approach, kitchen appliances seamlessly merge with the surrounding cabinetry, hidden to those passing by. Large appliances like refrigerators and dishwashers are concealed behind cleverly designed cabinetry rather than being prominent features, while smaller appliances find their place in dedicated appliance cupboards.

To further embrace integration in your kitchen design, consider concealed pantries, well-organised drawers, and implement a FOGO bin system to maintain order and functionality. Customised work zones ensure that every nook in your kitchen serves a specific purpose, enhancing its overall efficiency and functionality.



Integrated Fridge



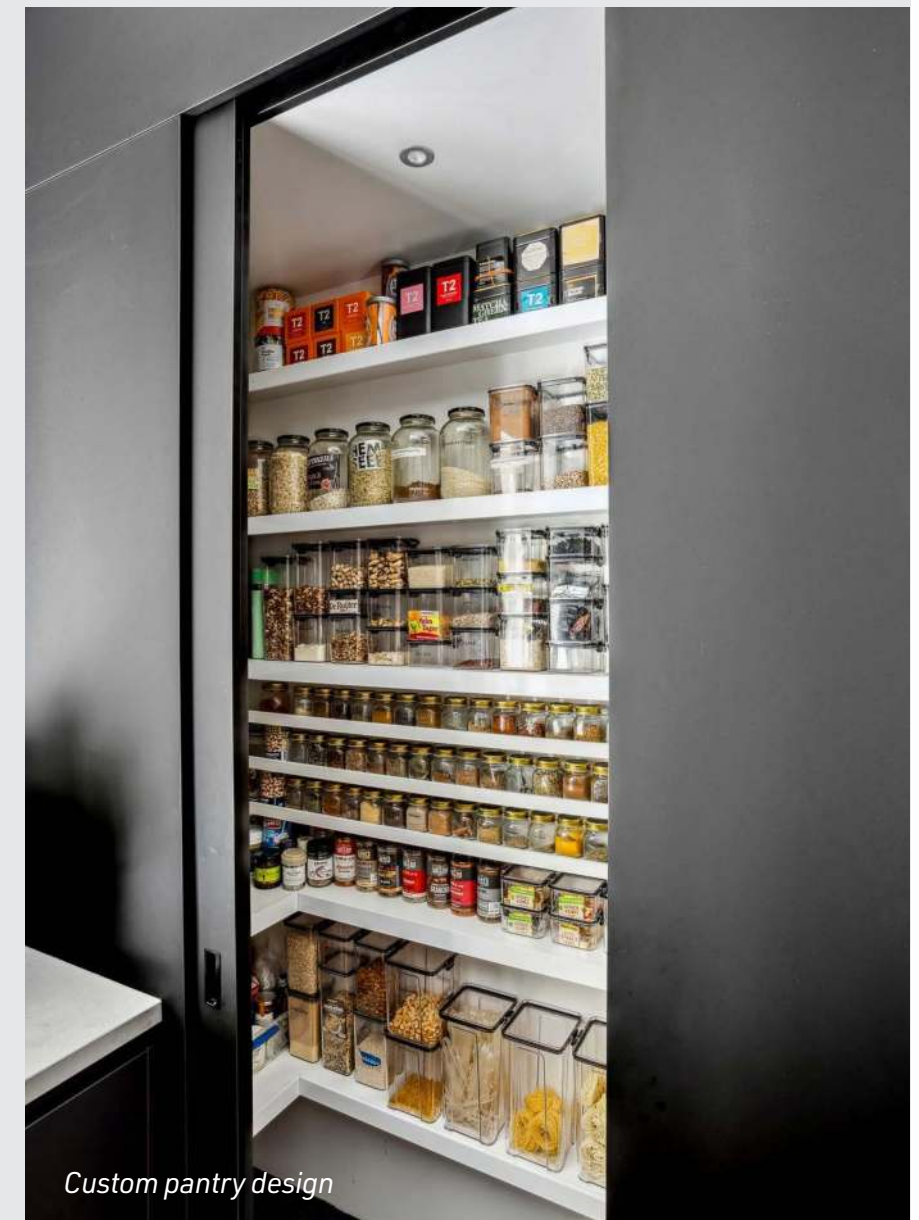
Concealed drawer design



Hafele Dispensa Pantry



Hafele Portero Set III



Custom pantry design



CUSTOM FURNITURE

IN THE VAST MAJORITY OF HOMES WE DESIGN KITCHENS FOR THESE DAYS; CABINETRY DESIGN IS EXTENDING WELL BEYOND THE KITCHEN.





We're talking about beautiful bespoke cabinetry designs that are replacing standalone furniture and seamlessly enhancing the overall interior design of your home.

In the projects shown here, we have helped our clients kitchen styles flow on from their kitchen area to incorporate showcase wine racks and dedicated dining areas and bench seat designs. In our Nedlands project pictured top left we have helped create a beautiful bespoke entertainment unit that connects with the overall kitchen style but is a statement piece of furniture in it's own right.





Bespoke bar with moving stone splashback

SMART TECHNOLOGY

SMART TECHNOLOGY IS FAST BECOMING A KITCHEN MUST HAVE FOR MANY PEOPLE THESE DAYS.

Smart kitchens include technology built into the design for added convenience for the homeowner. In the kitchen shown here we have built a bespoke bar with a moving stone splashback that lowers to reveal a hidden whisky bar. Visit our Bassendean showroom to see all these items and more mentioned here on display in working kitchen designs.



Hafele Point Pod



Hafele Docking Drawer

Hafele Point Pods are sought after by our clients as they provide power connections when needed and are then concealed in your benchtop when not in use. Hafele Docking Drawers just make sense to create a tech hub where all your devices can be stored and charge out of sight.

We stand by Blum Servo Drive – a handless electrical opening system for your cabinets, built-in smart fridges, dishwashers and other appliances. Blum's system allows you to open your Aventos cabinets with a gentle touch of a button, while its flex range gives you the same advantages with a range of kitchen appliances.

You can now choose for your home kitchen; stylish all in one taps that provide you with your water options at the touch of a button.

Zip Water Hydro Taps are popular with our clients these days as they offer boiling, chilled, ambient and sparkling water direct from the tap. They also eliminate the need for a kettle in your home which frees up your bench space.



Hafele Ninka Qanto-B



Zip Water Hydro Taps



TRENDING DESIGN DETAILS

FLUTED GLASS

AN ELEGANT AND TIMELESS DESIGN FEATURE FOR YOUR KITCHEN CABINETRY.

Polytec Fluted glass is striking addition to your kitchen design that can be used in aluminum frame, melamine or vinyl cabinetry doors.

The surface of the glass has vertical grooves giving it a corrugated appearance. With this surface it diffuses light and provides an obscured view into your glass cabinets.

Fluted glass is a striking way to add texture to your kitchen design and modernise overhead cabinetry like in our Swanbourne project shown here. Fluted glass looks beautiful in Modern Shaker, Mid-Century and high end modern kitchen designs.



TRENDING DESIGN DETAILS

COLOURED INTERNALS



GIVE YOUR KITCHEN STYLE THAT EXTRA WOW FACTOR WITH COLOURED INTERNALS TO YOUR INSIDE CABINETS.

This elevates the flow of colour in your kitchen design and adds depth to your cabinetry in places that would otherwise feel one-dimensional.

Alternatively, mix it up and create a contrasting colour scheme. In the project shown here we have used contrasting cabinetry colours on the inside of the overhead cabinetry to give the kitchen that multidimensional look.

Coloured internals link in well with the optimised storage trend as you get that beautiful flow of colour through your working zones and equally stunning aesthetics when your storage is concealed or on display.

This trend is not always limited to cabinetry design also - in the kitchen island pictured top right we have used European Oak Veneer on the underside of the island to create an interesting design feature breaking up layers of white.



TRENDING DESIGN DETAILS

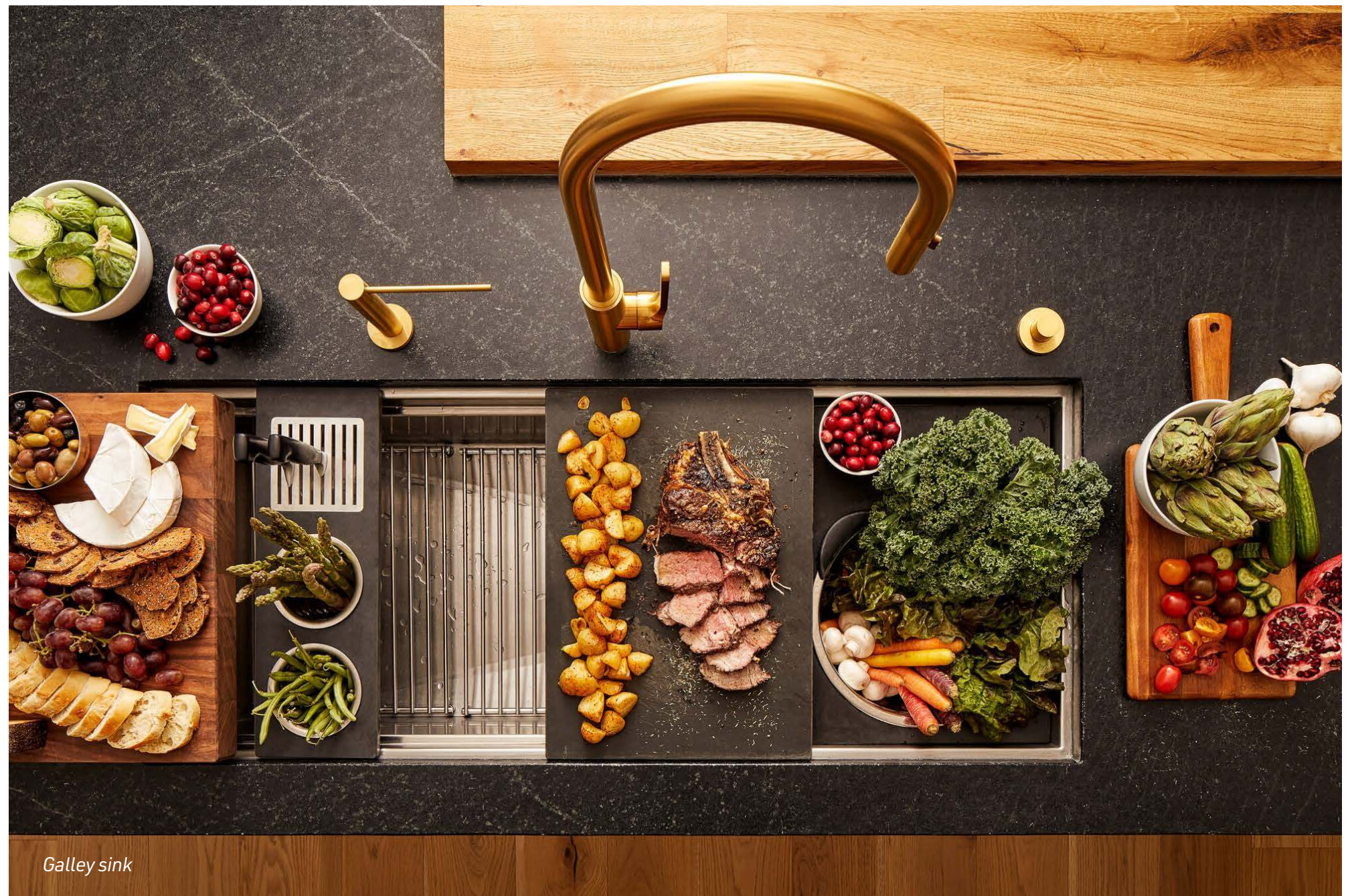
STYLISH SINKS

A MUST HAVE NECESSITY; BUT NOT NECESSARILY A BORING INCLUSION IN YOUR KITCHEN ANYMORE!

The Galley sink pictured here is the ultimate luxury inclusion for your kitchen. A complete culinary system where one can prepare, cook, serve, entertain, and clean all in one central and convenient place.

The Franke Bow Prep sink that includes extras such as chopping boards, knife blocks, and strainer bowls for kitchen preparation that are housed flush in the smaller sink bowl.

Want to conceal your sink? No problem. Oliveri makes a moulded granite sink with two glass panels that when completely closed conceal the sink bowls creating an uninterrupted bench surface that matches your appliances!



Galley sink



Franke Bow Prep sink



Oliveri Santorini Black double Bowl topmount sink with Glass top

REINVENTING THE FACE OF KITCHEN DESIGN

Our interior designers will help you design your dream kitchen to suit your space and your lifestyle.

Schedule a design consult with us to start designing your project!

We only work with the highest-grade of materials and fit our designs with only the most sought-after inclusions.

Every decision we make is about providing you with the most luxurious living experience possible.



VISIT OUR SHOWROOM TO BEGIN YOUR KITCHEN PROJECT.

View four working kitchens on display, the latest in kitchen smart storage options and all the high end products and finishes available to you when you build your new kitchen with us.



Scan me to take a virtual walkthrough





Scan to take a virtual
walkthrough of our
showroom

Monday - Friday, 8.30am - 4pm
Saturdays 9am - 1pm

9270 0000
12 Dyer Road, Bassendean WA 6054

themaker.com.au



OF CREATING AWARD-WINNING KITCHENS